



PHILIPS

Clinical Education



Ergonomics and Work Related Musculoskeletal Disorders in Sonography

Fundamentals of injury prevention in the ultrasound lab.

In today's competitive and dynamic healthcare climate, it is critical to use your medical imaging systems to their fullest potential. Our goal at Philips Healthcare is to provide the clinical education you need to make the most of your equipment investment.

Philips ultrasound fundamentals FUN208

This Philips Clinical Education full day course is designed to meet the climbing need for education on the risks and implications of work related musculoskeletal disorders (WRMSDs). Attendees will review causes and risk factors, common injuries and corresponding treatment options, preventative

workflow and workspace measures, therapeutic exercises and stretches, and the economic impact of musculoskeletal injury on both the sonographer and the health care system.

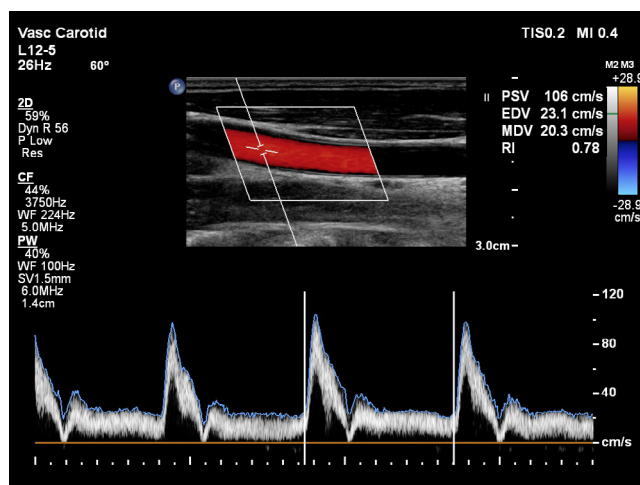
Prerequisite

Attendees should be practicing sonographers, ultrasound lab managers or sonography students.

Faculty

Philips Clinical Education Specialists

Ergonomics and Work Related Musculoskeletal Disorders in Sonography (FUN208)



Course objectives

Upon completion of this training, you should be able to:

- Identify the risk factors for WRMSDs as pertaining to sonography
- Identify the symptoms associated with WRMSDs
- Demonstrate the proper way to set up your workstation and align your posture during scanning to help reduce your risk of injury
- Explain the importance of protecting yourself against injury
- Perform important exercises that can help keep you healthy and able to work
- Explain the economic impact of injury on

Locations

Course may be held in Philips central locations in Alpharetta, Georgia; Bothell, Washington; and Cleveland, Ohio. Other locations may be offered.

For more information

Contact Philips Ultrasound Clinical Education at

800.522.7022 and visit our education catalog at

www.learningconnection.philips.com/ultrasound

