

Advanced Customer Training Cardiovascular

Philips Ultrasound
Advanced Customer
Training 200 Series
Cardiovascular

The decision to work with Philips is something we take very seriously. Our goal is to provide the education you need to make the most out of your investment.

Advanced Customer Training (ACT) courses are designed to educate customers on the leading edge technologies specific to each system and application. Following your onsite installation training, the intensive ACT serves to expand and deepen your knowledge.

This course is intended for sonographers as well as physicians who require additional knowledge of system controls.

Prerequisite

Attendees should have completed their onsite installation training.

Faculty

Philips Ultrasound Clinical Education.

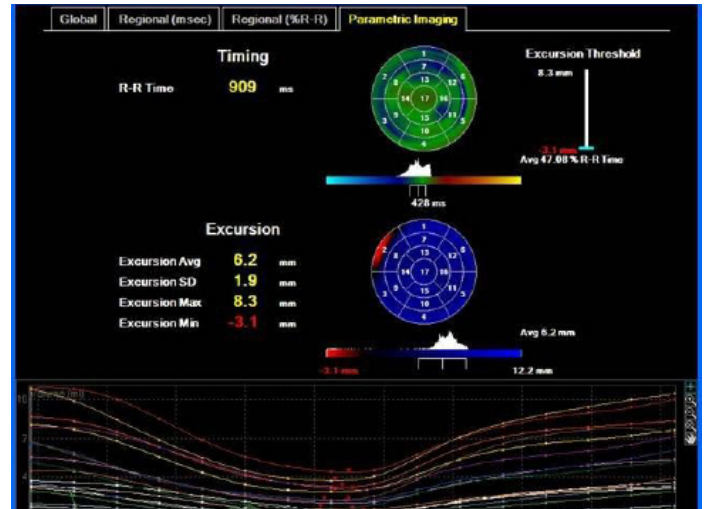
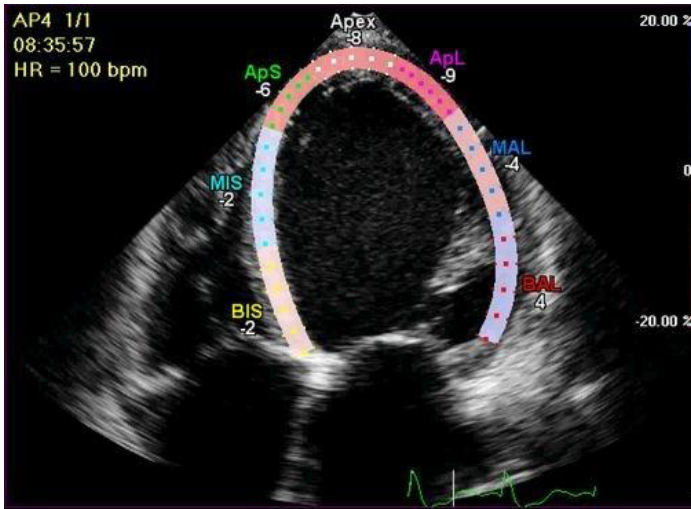
Locations

Will be held in Philips central locations in Alpharetta, Georgia, Bothell, Washington and Cleveland, Ohio.

For more information

Contact Philips Ultrasound Clinical Education at 800-522-7022 and visit our education catalog at www.learningconnection.philips.com/ultrasound

PHILIPS



Advanced Customer Training Series

This three-day program provides a solid foundation in the principles and clinical applications for cardiac analysis on the iE33. You may attend one, two or all three days of the courses depending on your ultrasound system options.

Bundled Courses

CV200 + CV202 = CV203 (ACT 2D, 3D)

CV202 + CV205 = CV206 (ACT 3D, Stress Echo)

CV200 + CV202 + CV205 = CV207 (ACT 2D, 3D, Stress Echo)

Advanced Customer Training 2D (CV200)

This class is an introduction to QLAB 2D quantification. QLAB is a software program that allows users to perform measurements on Tissue Doppler Images (TDI) and speckle information within 2D datasets. The QLAB programs covered in this session are SQ (Strain Quantification), TMAD (Tissue Motion Annular Displacement), and CMQ (Cardiac Motion Quantification). This class also includes image acquisition and optimization on the iE33.

Course objectives

Upon completion of this program, attendees should be able to:

- Discuss CMQ for additional information about strain, strain rate, rotation, and more
- Explain TMAD to assess LV function on technically difficult images
- Describe using SQ for information about displacement, mean velocity, strain, and strain rate

Advanced Customer Training Live 3D (CV202)

This class is an introduction to xMATRIX technology and functionality. Participants will learn 3D image acquisition and optimization on the iE33 during live scanning workshops. The course also provides an introduction to 3D image quantification utilizing the 3DQ (3D Quantification), 3DQA (3D Quantification Advanced) plug-ins. These QLAB programs allow the user to quantify various parameters on 3D datasets, including EF, areas, distances, timing and volumes.

Course objectives

Upon completion of this program, attendees should be able to:

- Summarize Live xPlane imaging
- Illustrate Live 3D
- Discuss Full Volume
- Describe Color Full Volume

Advanced Stress Echo with Live 3D (CV205)

This course will present the benefits of using Live 3D volumes and iRotate for stress echo. There are workshops and demonstrations of using various xMatrix modes for stress acquisition.

Course objectives

Upon completion of this program, attendees should be able to:

- Demonstrate Live 3D stress echo
- Explain iRotate stress

Please visit www.learningconnection.philips.com/ultrasound



© 2014 Koninklijke Philips Electronics N.V.
All rights are reserved.
JUN 2014

Philips Healthcare reserves the right to make changes in specifications and/or to discontinue any product at any time without notice or obligation and will not be liable for any consequences resulting from the use of this publication.

Philips Healthcare is part of Royal Philips Electronics

www.philips.com/healthcare
healthcare@philips.com

Philips Healthcare
22100 Bothell Everett Highway
Bothell, Washington 98021