



Basic System Training Cardiology iE33

Integrating 2D and 3D imaging for improved diagnosis

Philips Ultrasound
Cardiology 204

This two-day program provides detailed instruction as well as hands-on exercises to assist attendees in using the iE33 to its maximum potential. Interactive presentations with Philips clinical education staff provide a comprehensive review of cardiac system controls and setups. Guided workshop then allow attendees to obtain hands-on experience with the topics presented prior to returning to their own facilities. This program is ideally suited for new staff or sonographers who were unavailable at installation training. This material is designed for a user who has minimal familiarity with the iE33.

Course objectives

Upon successful completion of this program, attendees should be able to:

- Identify the ergonomic, basic and advanced system features
- Describe system controls that enhance image quality and system functionality for cardiac exams
- Explain advanced system controls for setting outstanding diagnostic performance
- Describe technologies, their utilization and clinical benefits
- Apply system optimization techniques to improve scanning skills
- Describe the steps to perform a basic stress echocardiogram

PHILIPS

Basic System Training Cardiac iE33 (CV204)

Topics presented

- System overview
- System setups and annotations
- 2D imaging and optimization
- Spectral Doppler
- Color Doppler
- Tissue Doppler Imaging
- Cardiac analysis package
- Basic stress echo and protocols
- System connectivity

Pre-requisite knowledge

A thorough knowledge and understanding of 2D echocardiography is recommended for this program.

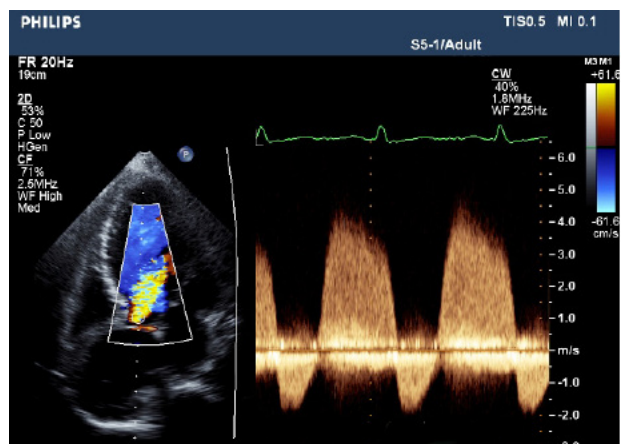
This course is intended for anyone who requires additional ultrasound knowledge.

Location

Course will be held at the various Philips training centers in Alpharetta, Georgia; Bothell, Washington; and Cleveland, Ohio. This program may also be offered in other regional locations.

Faculty

Philips Ultrasound Clinical Education



For More Information

Contact Philips Ultrasound Clinical Education at 800-522-7022 and visit our education catalog at www.learningconnection.philips.com/ultrasound

Please visit www.learningconnection.philips.com/ultrasound



© 2014 Koninklijke Philips Electronics N.V.
All rights are reserved.
JUN 2014

Philips Healthcare reserves the right to make changes in specifications and/or to discontinue any product at any time without notice or obligation and will not be liable for any consequences resulting from the use of this publication.

Philips Healthcare is part of Royal Philips Electronics

www.philips.com/healthcare@philips.com

Philips Healthcare
22100 Bothell Everett Highway
Bothell, Washington 98021