

Advanced System Training Cardiovascular EPIQ

Philips Ultrasound
Advanced System
Training 213 Series
Cardiovascular

The decision to work with Philips is something we take very seriously. Our goal is to provide the education you need to make the most out of your investment.

Advanced System Training (AST) courses are designed to educate customers on the leading edge technologies specific to each system and application. Following your onsite installation training, the intensive AST serves to expand and deepen your knowledge.

Prerequisite

Attendees should have completed their onsite installation training.

Faculty

Philips Ultrasound Clinical Education.

Locations

Will be held in Philips central locations in Alpharetta, Georgia; Bothell, Washington; and Cleveland, Ohio.

For more information

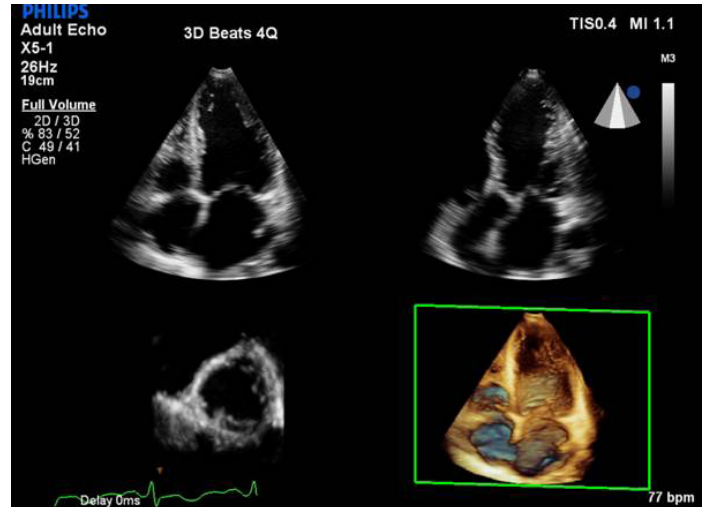
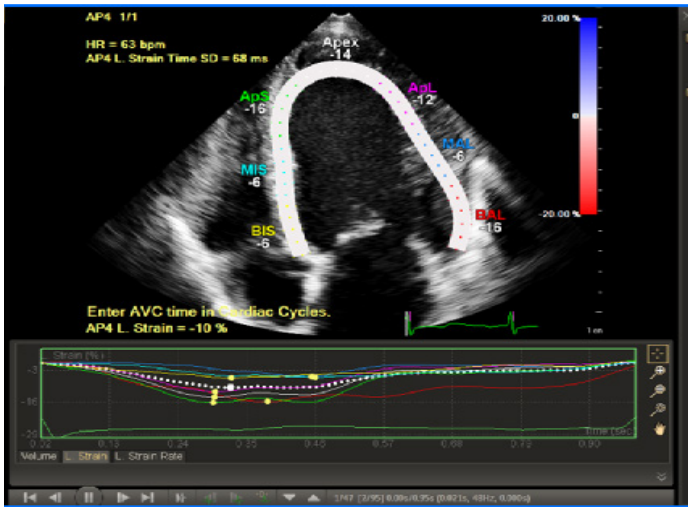
Contact Philips Ultrasound Clinical Education at 800-522-7022 and visit our education catalog at www.learningconnection.philips.com/ultrasound

EPIQ uses nSight imaging and anatomical intelligence to change the way ultrasound is performed. The AST courses demonstrate how to apply the technology and enhance your workflow using real life examples.

This course is intended for sonographers as well as physicians who require additional knowledge and practice of system controls.



PHILIPS



Advanced Customer Training Series

This two-day program provides a solid foundation in the principles and clinical applications for cardiac analysis on the EPIQ ultrasound system. You may attend one or two days of the course depending on your ultrasound system options.

Bundled Courses

CV210 + CV212 = CV213 (AST 2D, 3D)

Advanced System Training Cardiovascular 2D EPIQ (CV210)

This class is an introduction to image optimization and acquisition on the EPIQ ultrasound system as well as QLAB 2D quantification. QLAB is a software program that allows users to perform measurements on 2D datasets. The QLAB programs covered in this session include the AutoStrain tools, aTMAD (Tissue Motion Annular Displacement), a2DQ (2D Quantification for EF), and aCMQ (Cardiac Motion Quantification).

Course objectives

Upon completion of this program, attendees should be able to:

- Explain ZeroClick Technology and how it can improve workflow
- Discuss aCMQ and the AutoStrain suite for additional information about strain, strain rate, rotation, and more
- Explain aTMAD to assess LV function on technically difficult images
- Explain a2DQ and its use in assessing LV function
- Describe the specific settings for coronary imaging and their clinical relevance.
- Use SmartExam to reduce keystrokes during studies

Advanced System Training Cardiovascular Live 3D EPIQ (CV212)

This class is an introduction to xMATRIX technology and functionality on the EPIQ system. Participants will learn 3D image acquisition and optimization on EPIQ during live scanning workshops. The course also provides an introduction to 3D image cropping and manipulation. Learners will review multiple imaging modes and the utility of each mode. Workshops will offer cropping exercises and allow customers hands on experience with 3D datasets.

Course objectives

Upon completion of this program, attendees should be able to:

- Summarize Live xPlane imaging
- Illustrate Live 3D
- Discuss Full Volume
- Describe Color Full Volume
- Explore Quick Vue, Face Crop and iCrop

Please visit www.learningconnection.philips.com/ultrasound



© 2020 Koninklijke Philips N.V.
All rights are reserved.
AUG 2017

Philips Healthcare reserves the right to make changes in specifications and/or to discontinue any product at any time without notice or obligation and will not be liable for any consequences resulting from the use of this publication.

Philips Healthcare is part of Royal Philips

www.philips.com/healthcare
healthcare@philips.com

Philips Healthcare
22100 Bothell Everett Highway
Bothell, Washington 98021