

# Advanced System Training Cardiovascular EPIQ

Philips Ultrasound  
Advanced System  
Training 213 Series  
Cardiovascular

The decision to work with Philips is something we take very seriously. Our goal is to provide the education you need to make the most out of your investment.

Advanced System Training (AST) courses are designed to educate customers on the leading edge technologies specific to each system and application. Following your onsite installation training, the intensive AST serves to expand and deepen your knowledge.

#### Prerequisite

Attendees should have completed their onsite installation training.

#### Faculty

Philips Ultrasound Clinical Education.

#### Locations

Will be held in Philips central locations in Alpharetta, Georgia; Bothell, Washington; and Cleveland, Ohio.

#### For more information

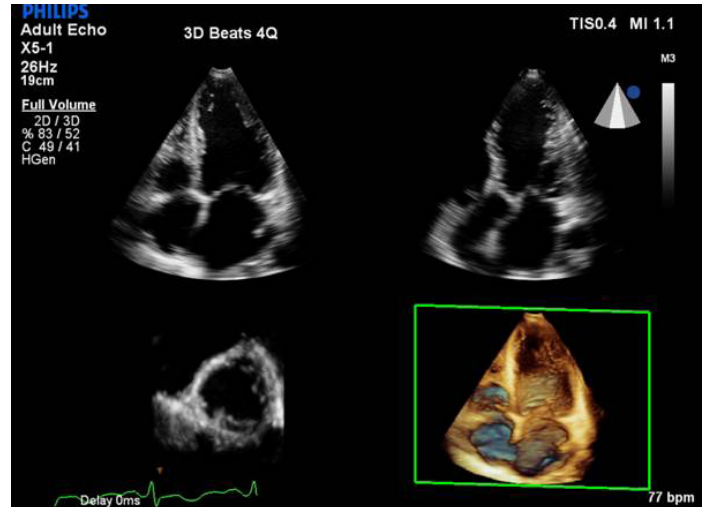
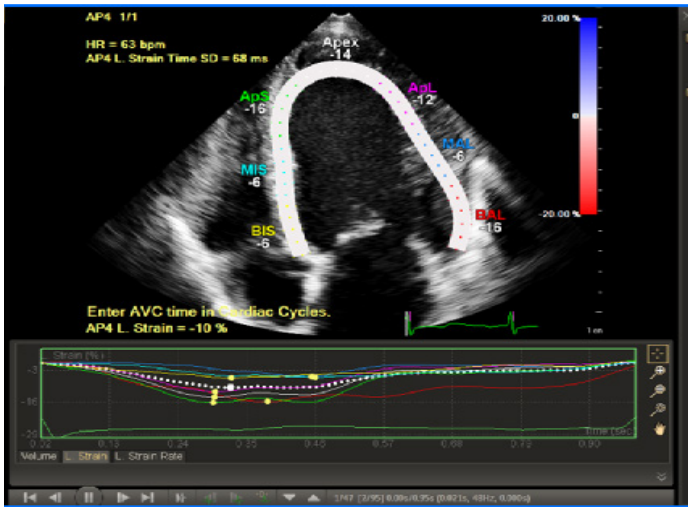
Contact Philips Ultrasound Clinical Education at 800-522-7022 and visit our education catalog at [www.learningconnection.philips.com/ultrasound](http://www.learningconnection.philips.com/ultrasound)

EPIQ uses nSight imaging and anatomical intelligence to change the way ultrasound is performed. The AST courses demonstrate how to apply the technology and enhance your workflow using real life examples.

This course is intended for sonographers as well as physicians who require additional knowledge and practice of system controls.



# PHILIPS



### Advanced Customer Training Series

This two-day program provides a solid foundation in the principles and clinical applications for cardiac analysis on the EPIQ ultrasound system. You may attend one or two days of the course depending on your ultrasound system options.

### Bundled Courses

CV210 + CV212 = CV213 (AST 2D, 3D)

### Advanced System Training Cardiovascular 2D EPIQ (CV210)

This class is an introduction to image optimization and acquisition on the EPIQ ultrasound system, additional imaging modes for LV assessment, and AutoStrain tools to include LV, RV and LA strain.

### Course objectives

Upon completion of this program, attendees should be able to:

- Explain ZeroClick Technology and how it can improve workflow
- Discuss AutoStrain tools and additional information about strain, strain rate, rotation, and more
- Explain additional imaging techniques to assess LV function on technically difficult images

### Advanced System Training Cardiovascular Live 3D EPIQ (CV212)

This class is an introduction to xMATRIX technology and functionality on the EPIQ system. Participants will learn 3D image acquisition and optimization on EPIQ.

### Course objectives

Upon completion of this program, attendees should be able to:

- Summarize Live xPlane imaging
- Illustrate Live 3D
- Discuss Full Volume
- Describe 3D with color

Please visit [www.learningconnection.philips.com/ultrasound](http://www.learningconnection.philips.com/ultrasound)



© 2020 Koninklijke Philips N.V.  
All rights are reserved.  
Feb 2024

Philips Healthcare reserves the right to make changes in specifications and/or to discontinue any product at any time without notice or obligation and will not be liable for any consequences resulting from the use of this publication.

Philips Healthcare is part of Royal Philips  
Philips Healthcare  
22100 Bothell Everett Highway  
Bothell, Washington 98021  
[www.philips.com/healthcare](http://www.philips.com/healthcare)  
[healthcare@philips.com](mailto:healthcare@philips.com)