



Understanding Myocardial Mechanics 2

Diastology Work-up: A Comprehensive Approach to Relaxation and Filling Pressures

Philips Ultrasound
University
Cardiology 351

This one-day course is designed to provide cardiologists and sonographers with the fundamental skills required to analyze high-quality 2D and Doppler images for the assessment of function and physiology.

Jeffrey C. Hill, BS, RDCS,
FASE, Program Chair of the
Cardiovascular Sonography
Programs, Sanford-Brown College,
Boston Massachusetts

Course description

This one-day course will be taught by Jeffrey C. Hill, BS, RDCS, FASE. The course begins with a review of the basic understanding and essential measurements required for the assessment of diastolic function. Technical aspects including how to obtain quality tracings and measurements will prepare the attendee for the live scanning sessions.

In addition, the program will include cases demonstrating concordant and discordant information and how to troubleshoot diagnosis. Additional cases will include combined systolic and diastolic function including strain imaging. Live scanning workshops will demonstrate what and where to measure for diastolic evaluations.

Locations

Will be held in Philips central locations in Alpharetta, Georgia; Bothell, Washington; and Cleveland, Ohio.

PHILIPS

Understanding Myocardial Mechanics 2 (CV351)



Jeffrey C. Hill, BS,
RDCS, FASE

“This program provides an opportunity for the attendee to decipher the "Rosetta Stone" of diastolic function.”

Course objectives

Upon successful completion of this program, attendees should be able to:

- Explain the fundamentals of ventricular function and physiology
- List the measurements of diastolic function
- Perform accurate measurements of diastolic function
- Explain how to troubleshoot discordant data
- Develop a stepwise approach for the assessment of diastolic function

Facilitators and speakers

- Jeffrey C. Hill, BS, RDCS, FASE, Program Chair of the Cardiovascular Sonography Programs and Sanford-Brown College, Boston, Massachusetts
- Philips Ultrasound Clinical Education

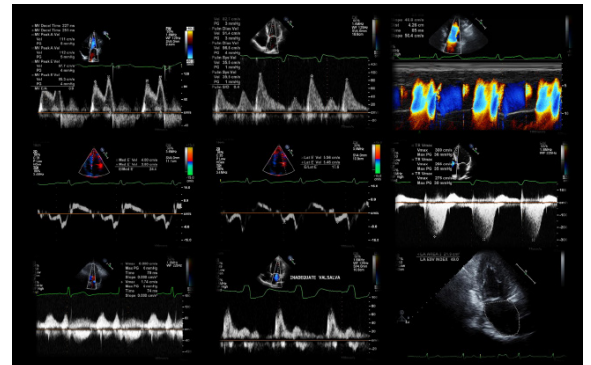
Pre-requisite knowledge

Attendees should have basic knowledge of 2D echocardiography for the assessment of regional systolic and diastolic function. Attendees may benefit from attending Understanding Myocardial Mechanics (CV 350) prior to this course.

This course is for physicians and sonographers interested in the assessment of myocardial mechanics and diastolic function.

For more information

Contact Philips Ultrasound Clinical Education at 800.522.7022 and visit our education catalog at www.learningconnection.philips.com/ultrasound



Please visit www.learningconnection.philips.com/ultrasound



© 2014 Koninklijke Philips N.V.
All rights are reserved.
JUN 2014

Philips Healthcare reserves the right to make changes in specifications and/or to discontinue any product at any time without notice or obligation and will not be liable for any consequences resulting from the use of this publication.

Philips Healthcare is part of Royal Philips

www.philips.com/healthcare
healthcare@philips.com

Philips Healthcare
22100 Bothell Everett Highway
Bothell, Washington 98021