



# Advanced Fetal Doppler Assessment

Enhance your obstetrical ultrasound exam

Philips Ultrasound  
University General  
Imaging / Women's  
Healthcare 304

In today's competitive and dynamic healthcare climate, it is critical to use your medical imaging systems to their fullest potential. Our goal at Philips Healthcare is to provide the clinical education you need to make the most of your equipment investment.

#### Course Description

The Advanced Fetal Doppler Assessment University is a one-day, physician-led course that will provide the learner with information on the clinical applications and techniques of fetal Doppler evaluation and interpretation. Educational material will be presented in the form of lectures, case presentations and live scanning sessions. Dr. Luis Goncalves is an accomplished physician who has focused his attention on maternal and fetal well-being. He uses ultrasound extensively to thoroughly evaluate fetal physiology and anatomic structures. Dr. Goncalves has published numerous articles regarding fetal Doppler assessment.

#### Locations

Will be held in Philips central locations in Alpharetta, Georgia; Bothell, Washington; and Cleveland, Ohio.

#### Prerequisites

A thorough knowledge and understanding of 2D Obstetrical Ultrasound and Doppler imaging fundamentals are required for this program.

# PHILIPS

# Advanced Fetal Doppler Assessment (GI-WHC304)



“In obstetrics, Doppler technology provides insights into the status of the maternal and fetal circulations, helping to identify pregnancies at risk for preclampsia and placental insufficiency, fetal brain sparing and fetal cardiac decompensation. Middle cerebral artery Doppler is a clinically proven tool to assess and manage fetuses at risk for anemia. A solid understanding of basic Doppler principles and adherence to good scanning technique are fundamental to correctly interpret and apply this tool in a clinical practice.”

Luis F. Goncalves M.D.

Luis F. Goncalves M.D.

## Course Objectives

Upon successful completion of this program, you should be able to:

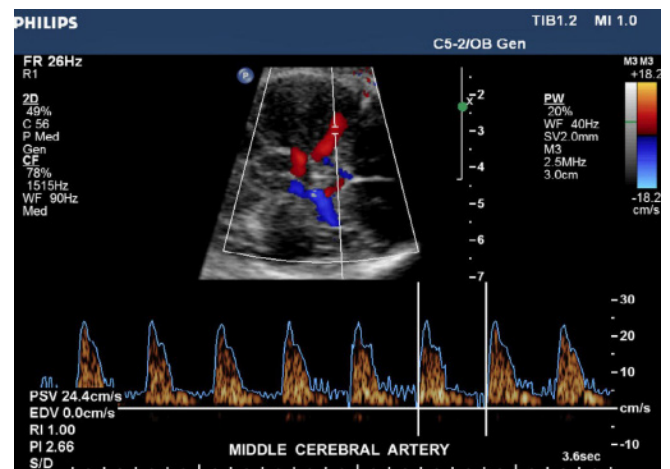
- Explain the basic knowledge of Doppler fundamentals
- Define maternal vascular flow and how it relates to the fetus
- Apply knowledge of the fetal circulation process
- Discuss the evaluation and interpretation of various maternal/fetal Doppler assessments:
  1. Umbilical arteries
  2. Middle Cerebral Artery (MCA)
  3. Ductus Venosus
  4. Aortic Isthmus
  5. Fetal Heart

## Faculty

- Luis F. Goncalves M.D.
- Philips Clinical Education Specialists

## For More Information

Contact Philips Ultrasound Clinical Education at 800.522.7022 and visit our education catalog at [www.learningconnection.philips.com/ultrasound](http://www.learningconnection.philips.com/ultrasound)



Please visit [www.learningconnection.philips.com/ultrasound](http://www.learningconnection.philips.com/ultrasound)



© 2014 Koninklijke Philips Electronics N.V.  
All rights are reserved.  
JUN 2014

Philips Healthcare reserves the right to make changes in specifications and/or to discontinue any product at any time without notice or obligation and will not be liable for any consequences resulting from the use of this publication.

Philips Healthcare is part of Royal Philips Electronics

[www.philips.com/healthcare](http://www.philips.com/healthcare)  
[healthcare@philips.com](mailto:healthcare@philips.com)

Philips Healthcare  
22100 Bothell Everett Highway  
Bothell, Washington 98021