



# Advanced Customer Training General Imaging EPIQ

Philips Ultrasound  
Advanced Customer  
Training 210 Series  
General Imaging

The decision to work with Philips is something we take very seriously. Our goal is to provide the education you need to make the most out of your investment.

#### Course description

Advanced Customer Training (ACT) courses are designed to educate customers on the leading edge technologies specific to each system and application. Following your onsite installation training, the intensive ACT serves to expand and deepen your knowledge.

EPIQ uses nSight imaging and anatomical intelligence to change the way ultrasound is performed. The ACT courses demonstrate how to apply the technology and enhance your workflow using real life examples.

This course is intended for sonographers as well as physicians who require additional knowledge and practice of system controls.

#### Pre-requisite knowledge

Attendees should have completed their onsite installation training.

#### Faculty

Philips Ultrasound Clinical Education.

#### Locations

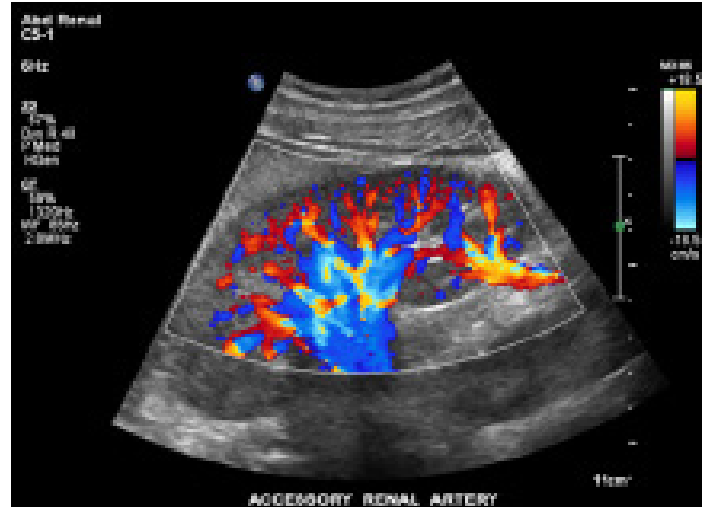
Will be held in Philips central locations in Alpharetta, Georgia; Bothell, Washington; and Cleveland, Ohio.

#### For more information

Contact Philips Ultrasound Clinical Education at 800.522.7022 and visit our education catalog at [www.learningconnection.philips.com/ultrasound](http://www.learningconnection.philips.com/ultrasound)



# PHILIPS



### Advanced Customer Training Series

This two-day program provides a solid foundation in the principles and clinical applications for general imaging, obstetrics and basic vascular exams on the EPIQ ultrasound system. You may attend one or two days of the course depending on your ultrasound system options.

### Bundled Courses

GI210 + GI212 = GI213 (ACT 2D, 3D)

### Advanced Customer Training General Imaging 2D EPIQ (GI210)

This one-day course provides an introduction to image optimization and acquisition on the EPIQ ultrasound system. The course will also cover a variety of advanced features which improve diagnostic confidence and workflow. Educational material will be presented in the form of lectures as well as instructor led hands-on scanning sessions.

### Course objectives

Upon completion of this program, attendees should be able to:

- Explain and utilize Image Optimization techniques
- Describe xMATRIX Live xPlane Imaging
- Explain and utilize Smart Exam Protocols to reduce keystrokes during exams
- Explain and describe the benefits of EPIQ technology as applied to elastography
- Explain Patient Data Management and Review

### Advanced Customer Training General Imaging 3D EPIQ (GI212)

This one-day course provides an introduction to the Volume Imaging applications of the EPIQ ultrasound system. Participants will learn 3D image acquisition, optimization and manipulation on EPIQ through detailed lectures and instructor led hands-on scanning workshops. The course also provides an overview of xMATRIX technology and functionality including Panoramic Volume Imaging.

### Course objectives

Upon completion of this program, attendees should be able to:

- Explain and describe the acquisition of 3D/4D volumes
- Describe the benefits of Volume Imaging for various clinical applications
- Describe xMATRIX Volume Imaging
- Define Multi-Planar Reformatted Views (MPRs)
- Describe on-screen tools and rendering tools
- Explain and utilize Panoramic Volume Imaging
- Define Color Volume controls
- Explain and discuss QLAB and 3D calculations

Please visit [www.learningconnection.philips.com/ultrasound](http://www.learningconnection.philips.com/ultrasound)



© 2017 Koninklijke Philips N.V.  
All rights are reserved.  
AUG 2017

Philips Healthcare reserves the right to make changes in specifications and/or to discontinue any product at any time without notice or obligation and will not be liable for any consequences resulting from the use of this publication.

Philips Healthcare is part of Royal Philips

[www.philips.com/healthcare](http://www.philips.com/healthcare)  
[healthcare@philips.com](mailto:healthcare@philips.com)

Philips Healthcare  
22100 Bothell Everett Highway  
Bothell, Washington 98021